



Features

- GaN HEMT Based Design
- Universal AC input / Full range
- Built-in active PFC function, PF>0.97
- Protections: Short circuit / Overload / Over voltage / Over temperature
- High efficiency up to 93%
- Cooling by free air convection
- LED indicator for power on

Input/Output Specifications

Mode	Parameter	JV12T350-GaN	JV24T350-GaN
INPUT	Voltage range	90 ~ 264VAC / 125 ~ 373VDC	
	Frequency	47 ~ 63Hz	
	Efficiency	93%	
	AC current	4A/115VAC 2A/230VAC	
	Leakage current	<0.75mA / 240VAC	
OUTPUT	DC Voltage	12V	24V
	Rated current	29.2A	14.6A
	Current range	0~29.2A	0~14.6A
	Rated power	350W	
	RIPPLE & NOISE (max.) ^{Note.2}	200mVp-p	240mVp-p
Note	1. All parameters not specially mentioned are measured at 230VAC input, rated load and 25°C of ambient temperature. 2. Ripple & noise are measured at 20MHz of bandwidth by using a 12" twisted pair-wire terminated with a 0.1uf % 47uf parallel capacitor.		



General Specifications

Parameter	Min.	Typ.	Max.	Notes
MTBF	-	100,000 Hours	-	@25°C ambient temperature
Lifespan Time	75,000 Hours	-	-	In the range of specification required by normal use of the power supply at ambient temperature 55°C
Cold Start	-	-	1.0s	@-40°C

Protection

Parameter	Description
Over Voltage	Output current decade mode, recovers automatically after fault condition is removed.
Short Circuit	Hiccup mode, recovers automatically after fault condition is removed.
Over Temperature	Shut down o/p voltage, re-power on to recover.

Environmental Specifications

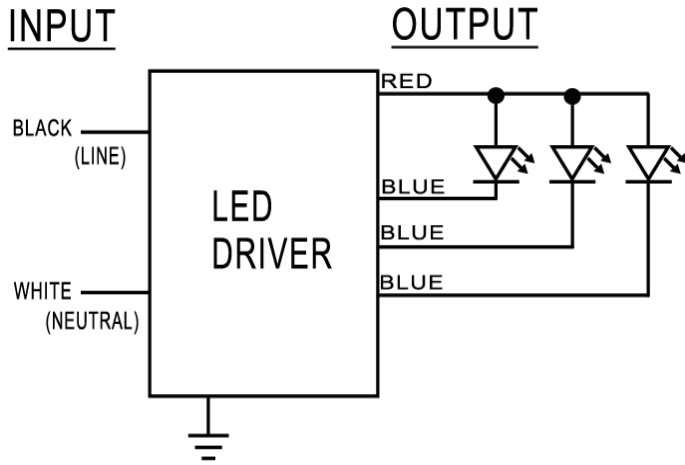
Parameter	Min.	Typ.	Max.	Notes
Operation Temperature	-40°C	-	80°C	
Storage Temperature	-40°C	-	80°C	
Humidity	10%	-	90%	
T-Case Temperature	-	-	90°C	

Safety and EMC Compliance

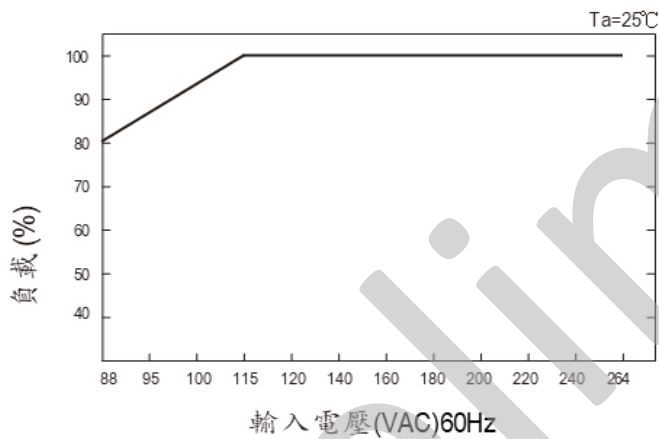
Safety Standards	Withstand Voltage	Isolation Resistance	EMC Standards	
			EMI	EMS
UL 8750 UL 1310	I/P-O/P: 2.0K Vac I/P-FG: 2.0K Vac O/P-FG: 0.5K Vac	I/P-O/P: I/P-FG: O/P-FG: 100Mohm/500VDC	FCC Part 15 class B UL8750 CSA C22.2 No. 250.13-14	FCC Part 15 class B UL 8750



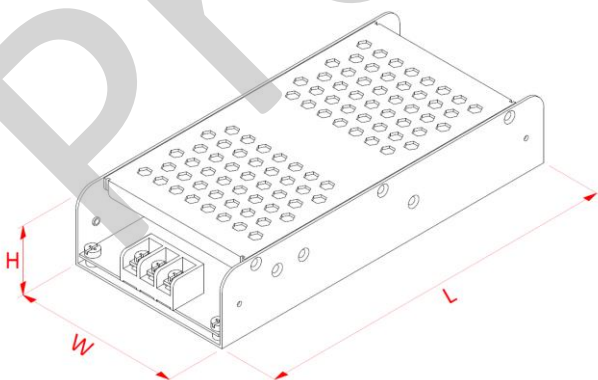
Wire Diagram



Load V.S. Input voltage



Enclosure



AM266

Enclosure	Inch	Cm
Length(L)	7.17	18.2
Width(W)	3.23	8.2
Height(H)	1.38	3.5

Data is based upon tests performed by Antron Electronics in a controlled environment and representative performance. Actual performance can vary depending on operating conditions. Specifications are subject to change without notice. All specifications are nominal unless otherwise noted.



Revision History

Change date	Description of Change		
	Item	From	To
2024/05/17	EMC Standards	FCC Part 15 class A	FCC Part 15 class B